

RED'S FARM PRESERVE



VISION PLAN

Big Ideas Meeting

Presented: December 16, 2025

Agenda



- Who is Park Pride?
- What is park visioning?
- Site orientation & existing conditions
- Design discussions/polling
- Next steps/Q&A



Mission

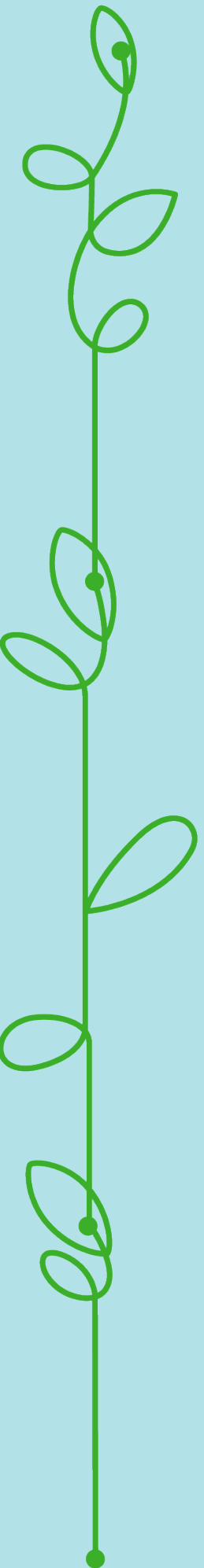
To engage communities to activate the power of parks

Vision

An Atlanta where every neighborhood has access to a great park

Philosophy

Park Pride believes great parks have the power to improve our quality of life and strengthen the fabric of our cities. When parks meet the needs and reflect the unique character of the communities they serve, they are welcoming places for all members of the community to gather, play, relax, and connect with nature, encouraging mental and physical health and enhancing the resilience of our neighborhoods. **This is the power of parks.**



2.0 | STEERING
COMMITTEE
MEETINGS



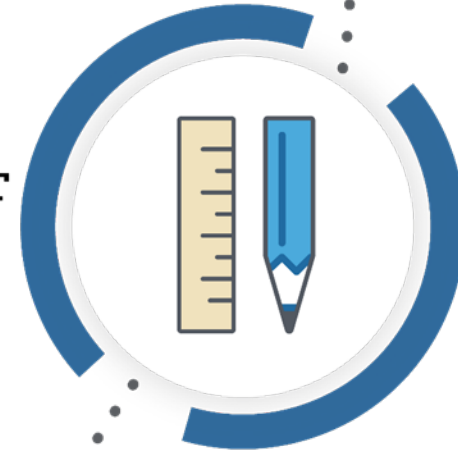
2.1 | RESEARCH &
DESIGN



03 | PUBLIC MEETING 1:
BIG IDEAS



04 | CONCEPT
DESIGNS



07 | PUBLIC MEETING 3:
VISION PLAN



08 | VISIONING REPORT



09 | NEXT STEPS



06 | DESIGN DEVELOPMENT



05 | PUBLIC MEETING 2:
PRELIMINARY PLANS



2.2 | COMMUNITY
SURVEY



01 | PARK
SELECTION



CORNERSTONES

Community

Input from the community is an essential part of the process. This helps ensure any future park investments will be relevant and impactful.

Civic

As the property owners and land managers, the City of Atlanta needs to ensure that any future investments fit within the larger plan for their parks and greenspaces.

Context

Parks don't exist in a vacuum and as designers it's important for us to consider any environmental constraints and the overall character of the neighborhood.

Concept

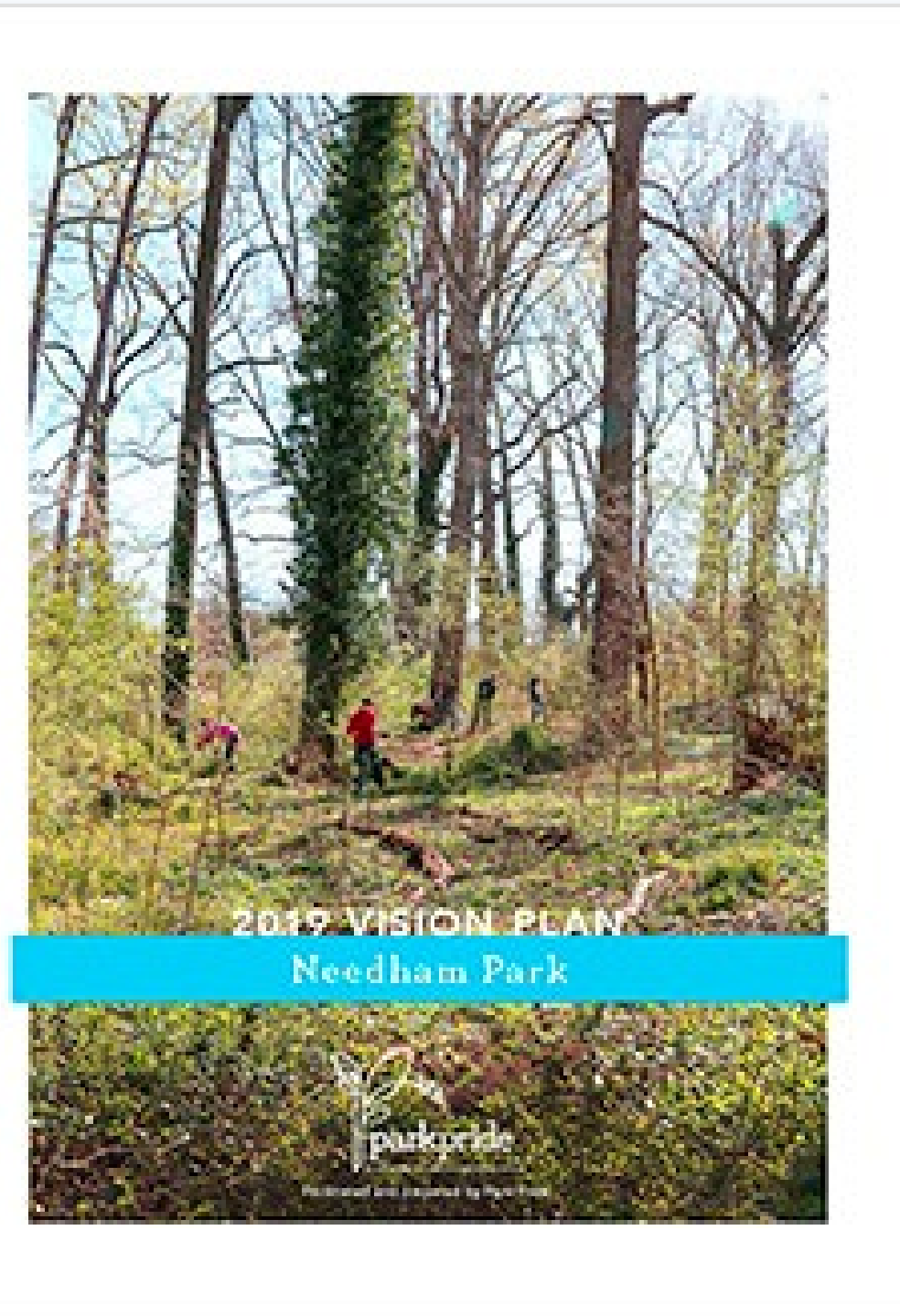
The designs are conceptual in nature. They are meant to be aspirational, typically phased-in over time. Not all design problems will be solved at this phase. It's the first word not the last word



What Does a Vision Plan Include?

Vision Plan Documents

- Executive summary
- History of the park
- Park's context
- Existing conditions
- Summary of the visioning process + survey results
- Vision plan drawing
- Project priorities
- Estimate of probable cost



Vision plans are archived at the **Atlanta History Center** or are available as downloadable PDFs at <https://parkpride.org/we-can-help/park-visioning/>

What Park Visioning is NOT

NOT

Automatically
Funded

NO

Weight of law unless
adopted by Board of
Commissioners

NOT

a promise

NOR

a mandate

RED'S FARM PRESERVE

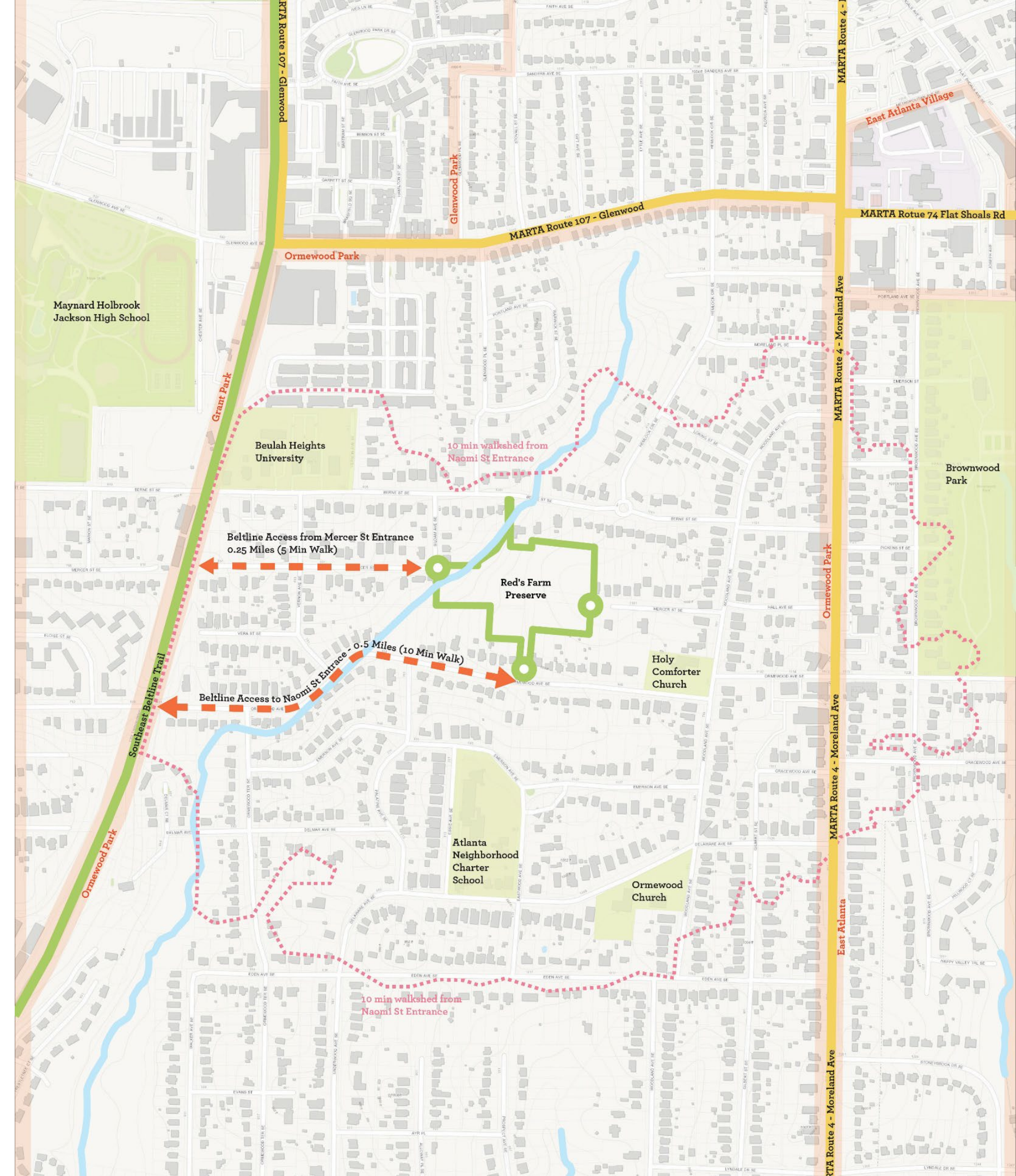


VISION PLAN

ORIENTATION & CONTEXT

Park Context

- Residential development on all sides around park
- In the Ormewood Park neighborhood adjacent to the neighborhoods of Glenwood Park, East Atlanta Village, East Atlanta, and Grant Park
- Two Beltline access points. Quarter mile (5 min walk) from the Mercer/Siloam entrance and a half mile (10 min walk) from the Naomi St entrance.
- No direct access from MARTA but Route 4 Moreland Ave is within a 10 min walk



Nearby Parks & Amenities

- Brownwood Park
(0.7 Miles Away)
 - East Atlanta Kids Club
 - Pavilion
 - Playground
 - Garden Space
 - Tennis Courts
 - Basketball Courts



Nearby Parks & Amenities

- Grant Park
(1.0 Miles Away)
 - Basketball Courts
(1 full size, 1 halfcourt)
 - Tennis & Pickleball Courts
 - Rec Center
 - Pool
 - Playground
 - Pavilions
 - Public Restroom
 - Historic Sites
 - Walking Trail
 - Atlanta Zoo



Nearby Parks & Amenities

- Cabbagetown Park
(2.0 Miles Away)
 - Community Center
 - Playground
 - Small Amphitheater



- Oakland Cemetery
(2.1 Miles Away)
 - Historic Sites
 - Paved walkways
 - Visitor's Center



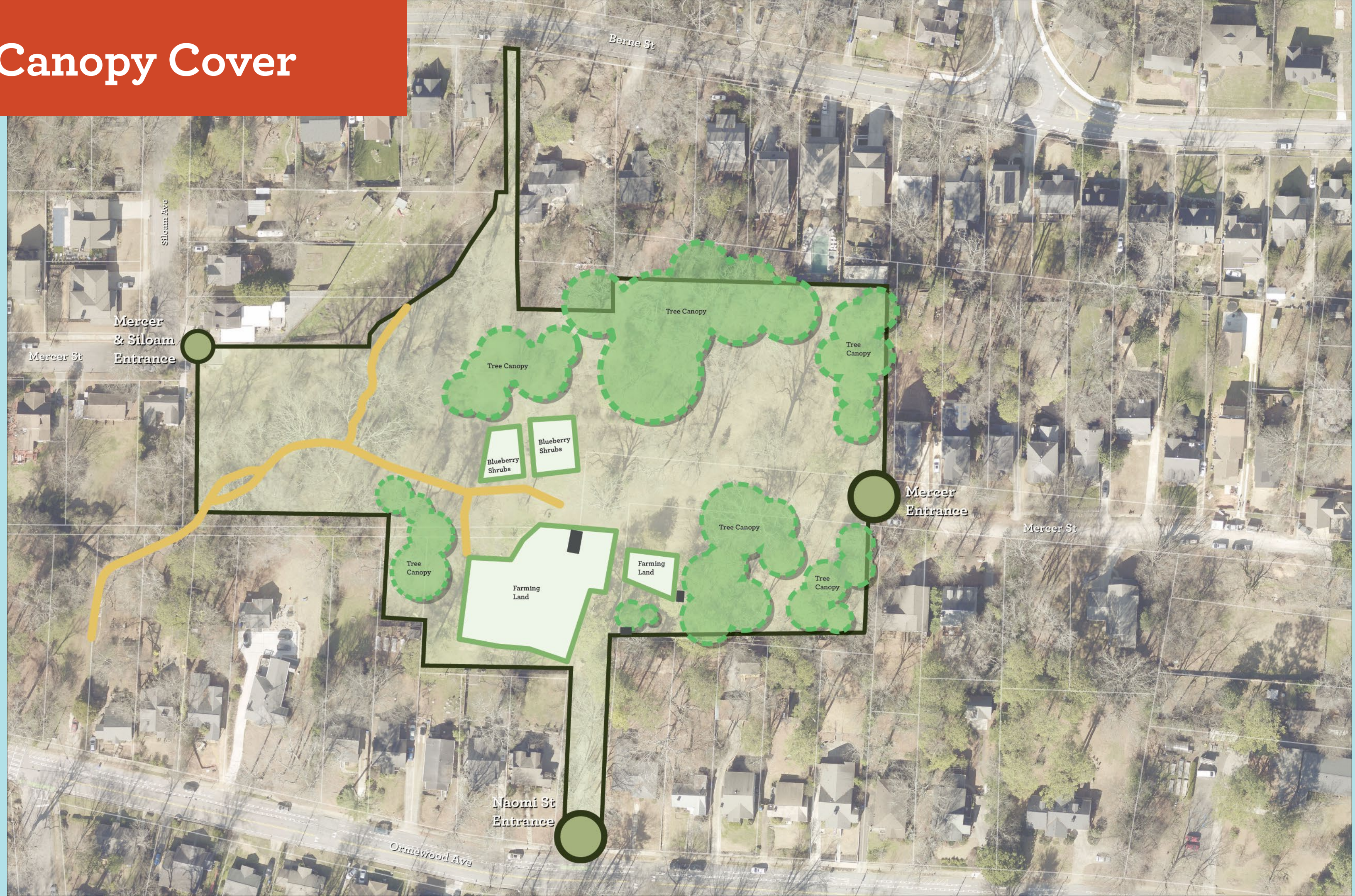
RED'S FARM PRESERVE



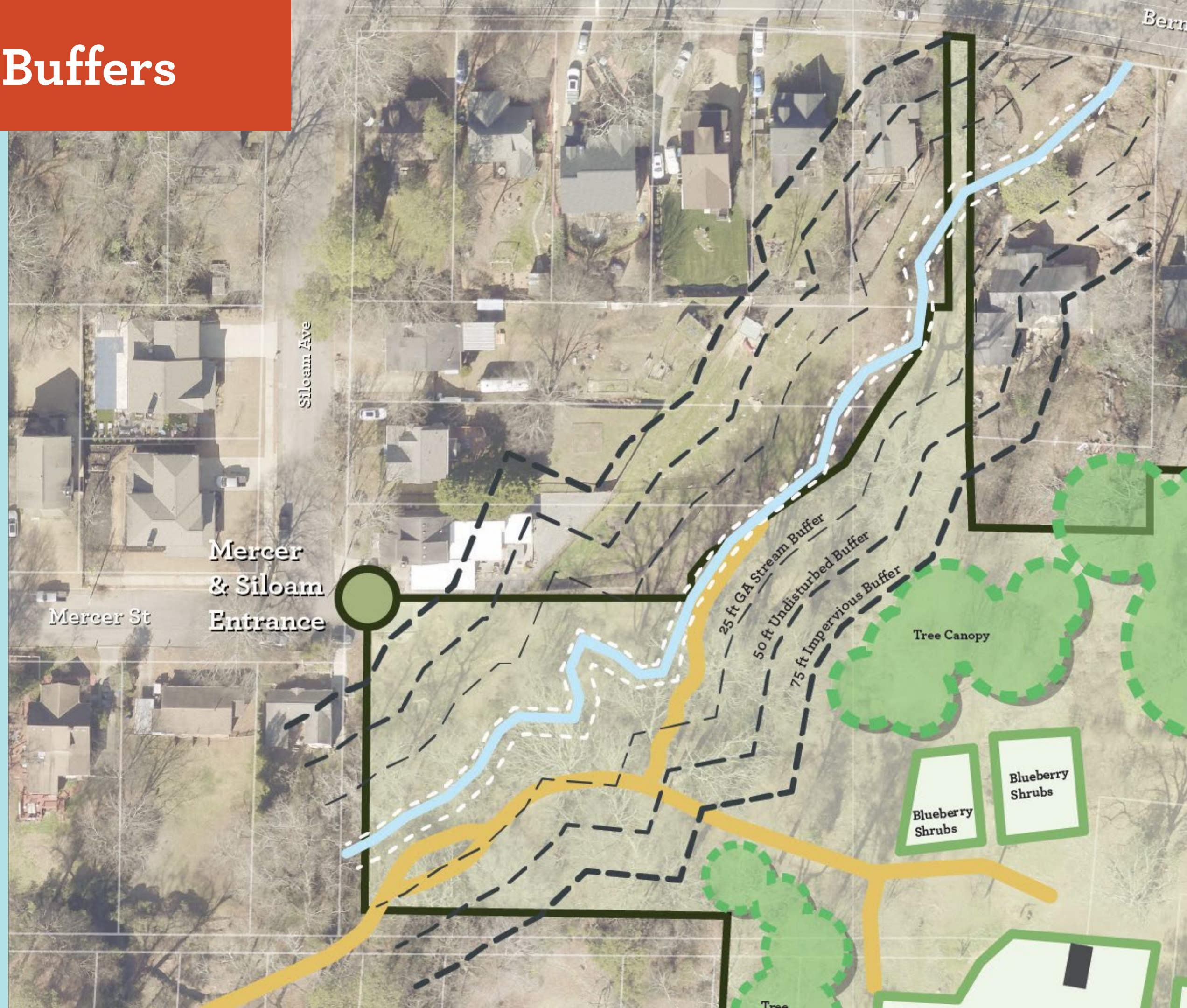
VISION PLAN

EXISTING CONDITIONS

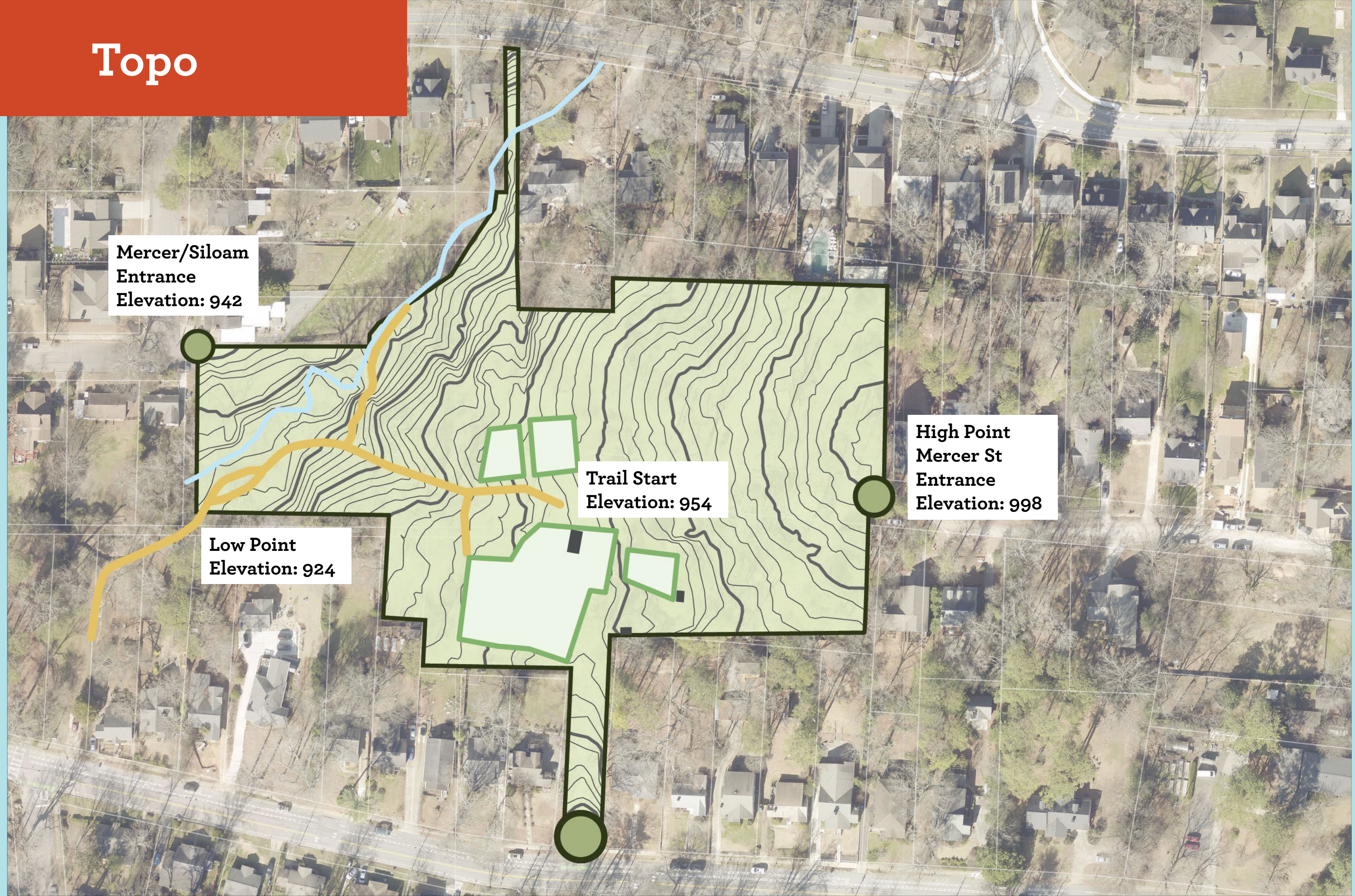
Canopy Cover



Stream Buffers



Topo



RED'S FARM PRESERVE



VISION PLAN

GUIDING PRINCIPLES

What are Guiding Principles?

Guiding principles are the big ideas that we come back to as we go through the Visioning Process.

- These are the outcomes you want to experience!
- These are the priorities
- These keep us on track toward YOUR goals!
- We check each design idea to make sure it upholds at least one of the Guiding Principles!

?

?

?

**What are YOUR BIG IDEAS for
Red's Farm Preserve?**

?

?

?

?

With your phone scan the
QR Code it will take you to
pollev.com/parkpride703



AA pollev.com

Welcome to parkpride703's presentation!

Introduce yourself

Enter the screen name you would like to appear alongside your responses

Name

0 / 50

Continue

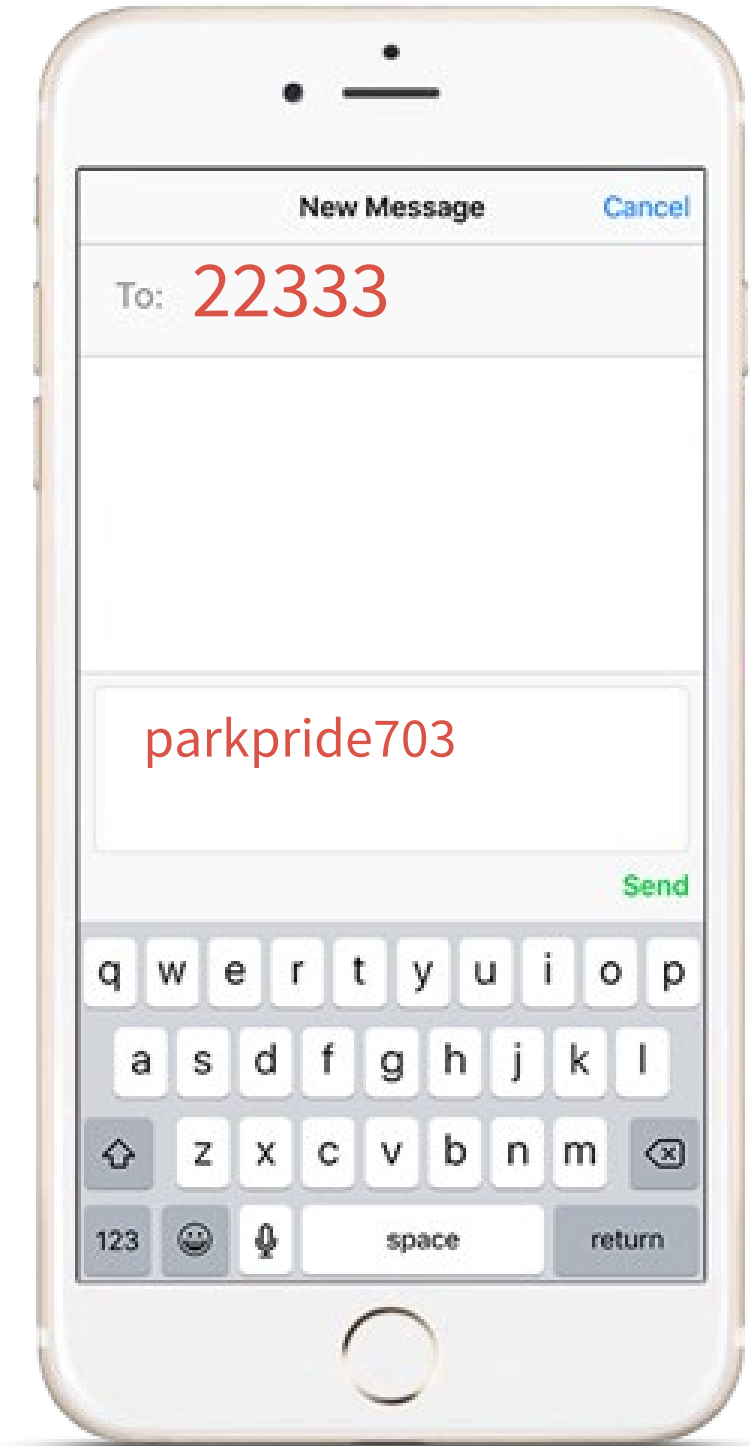
Skip

Using a screen name allows the presenter and other participants to attach your screen name to your responses. You can change your screen name at any time.

Home History Registration Log in

OR

To: **22333**
Text: **parkpride703**



Text voting

What are some of your roses for the park? (Answer up to three times)



What are some of your thorns for the park? (Answer up to three times)

unleashed space options leadership shade signage
 minimal-seating communication-streams limited meandering
 difficult-to-navigate art uneven crossing areas paving-naomi
 parking hill 22333 garden lack accessibility handicap
 rented naomi shelter bridge invasives safety electricity poison
 steep mobility trails invasive plants north-access clarity flat plot
 paving low creek-crossing access st creek coyotes kudzu
 pilot berne gravel-road communication enough lots slope
 no-meeting-area ivy active erosion handicapped dogs messy
 visibility bike-parking awareness overgrown benches lack-of-shelter
 mercer-st-entrance community coordinatoon
 unleashed-dogs potty lack-of-seating

What are 1-2 things that you would like to add to the park that aren't available at another nearby park? Answer up to three times



Next Steps

We'll gather your input from this meeting and create preliminary designs to be presented at the...

Second Public Meeting

February 4th 6:30 -7:30 PM
Ormewood Church

Final Public Meeting

April 22nd 6:30 – 7:30 PM
Red's Farm Preserve

Everyone please
take the survey!!
Yes, kids too!

Survey will close on:
January 12th

Scan the QR Code for more info

<https://parkvisioning.wixsite.com/reds-farm>

